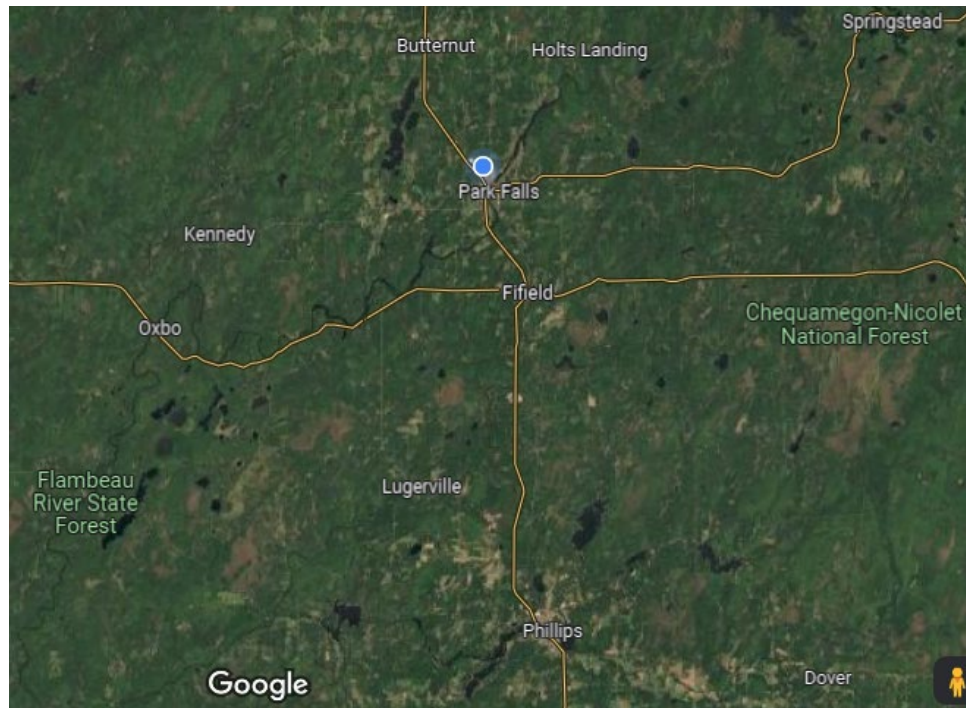
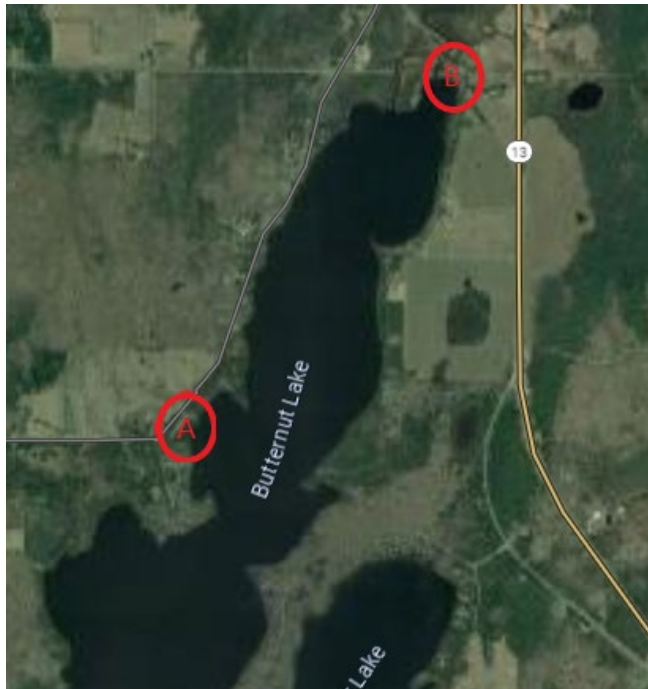


Boat Launches within 20 Miles



Butternut Lake



Butternut Lake is a 983-acre lake located in Ashland, Price Counties. It has a maximum depth of 32 feet. Visitors have access to the lake from public boat landings. Fish include Musky (Abundant), Panfish (Common), Largemouth Bass (Present), Smallmouth Bass (Present), Northern Pike (Present), Walleye (Abundant) and Sturgeon (Present). The lake's water clarity is low.

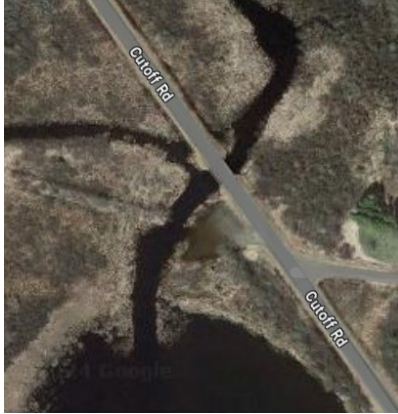
A - Butternut Lake Boat Launch – West side of Lake.

This is a modern boat launch with pavement and parking spaces for longer trucks and trailers. There is an outhouse on the premises. Fishing from the boat launch and surrounding area is permitted.

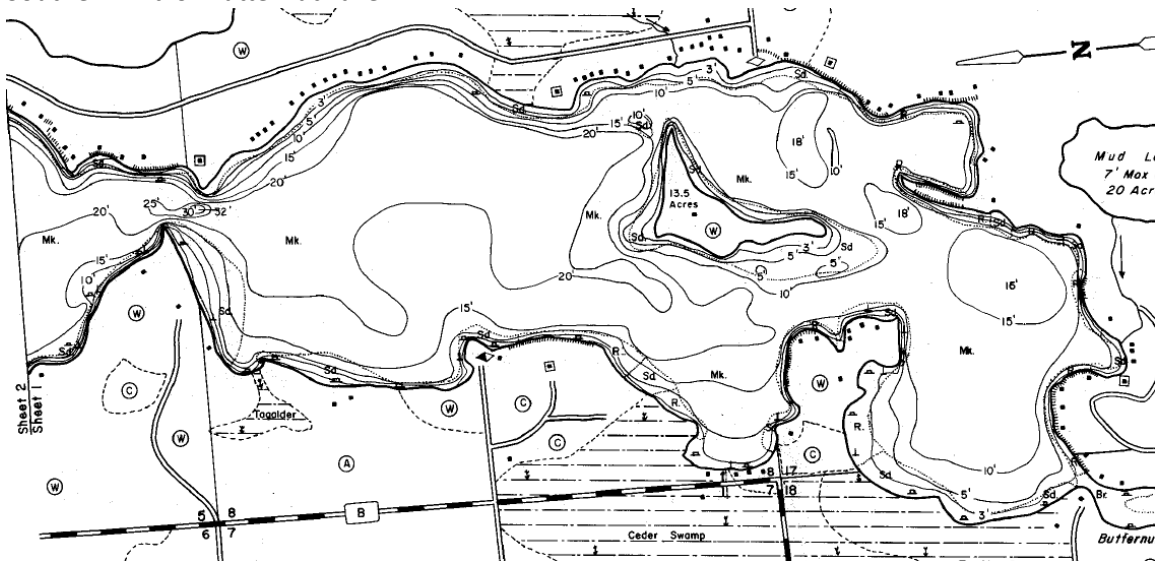


B – Butternut Lake Boat Launch – North side of Lake.

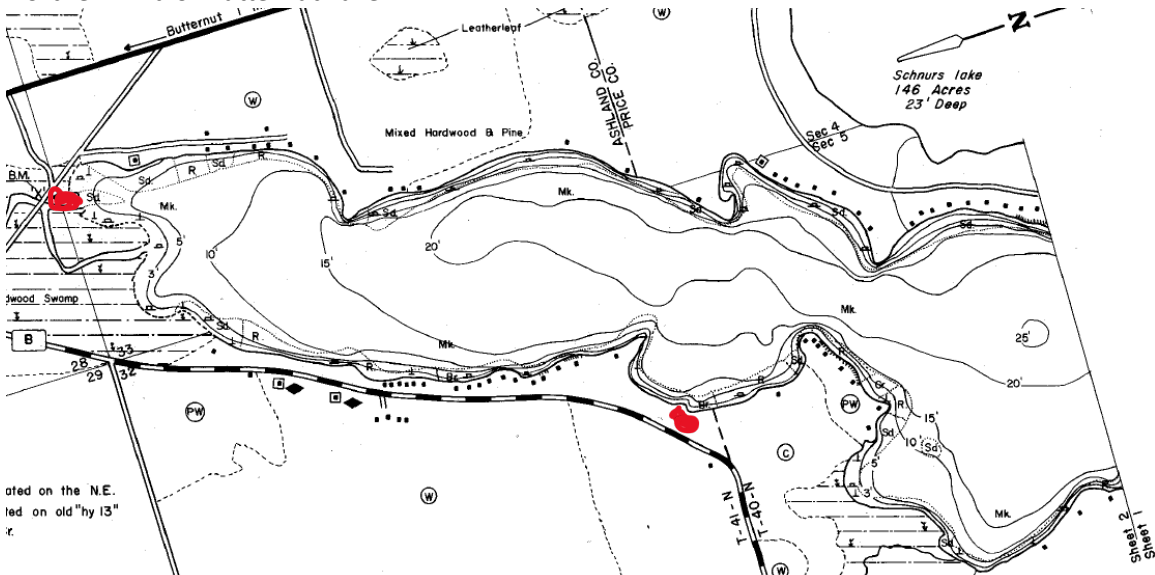
This launch is on the primitive side. This launch is for smaller boats and has a small gravel parking lot. Fishing from the shore is permitted but limited.



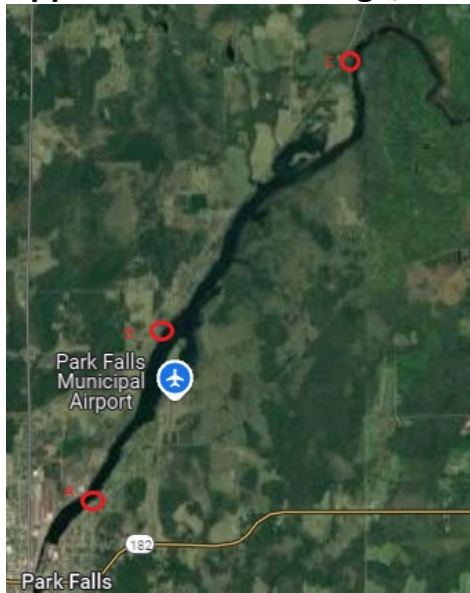
Southern End of Butternut Lake



Northern End of Butternut Lake



Upper Park Falls Flowage; North Fork of the Flambeau



Upper Park Falls Flowage 760 is a 310-acre lake located in Price, Ashland Counties. It has a maximum depth of 17 feet. Visitors have access to the lake from public boat landings. Fish include Musky (Common), Panfish (Common), Smallmouth Bass (Common), Northern Pike (Abundant), Walleye (Common) and Sturgeon (Common).

A - Hines Park Boat Launch - This is a modern boat launch with pavement and parking spaces for longer trucks and trailers. There is an outhouse on the premises. Fishing from the boat launch and surrounding area is permitted.



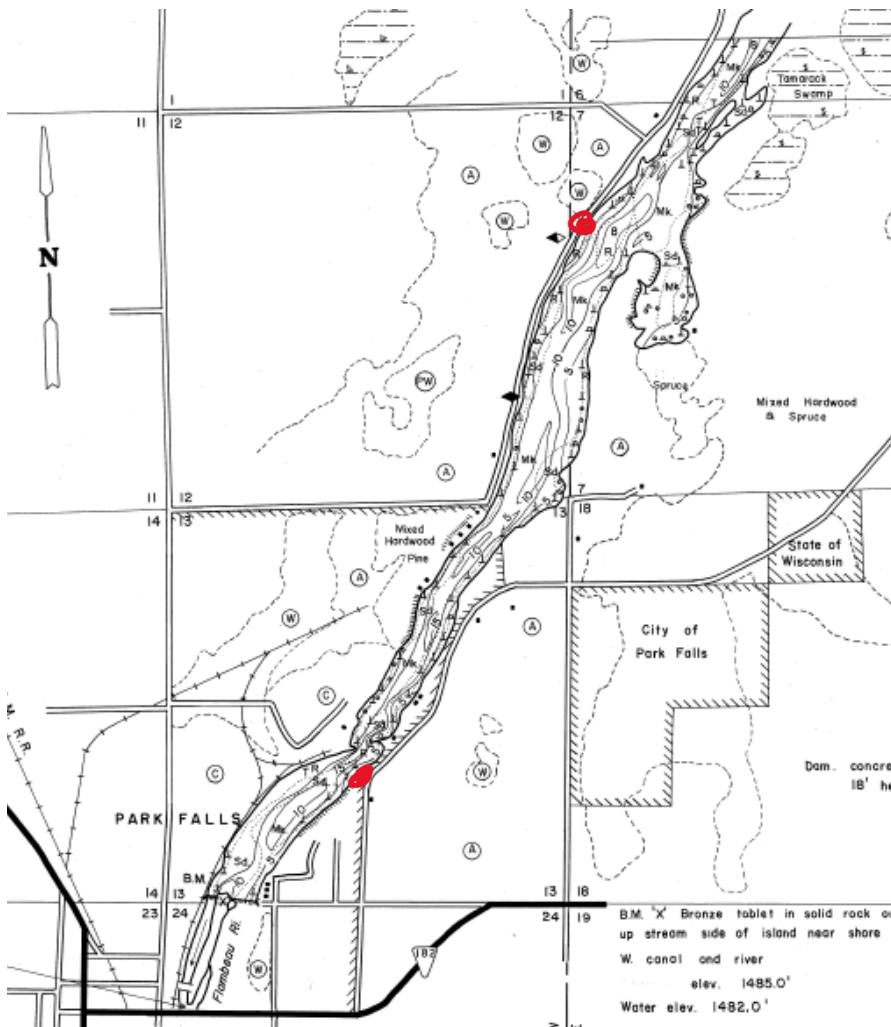
B – Pete’s Landing – West side of the North Fork of the Flambeau River above Park Falls.

This launch is on the primitive side. This launch is for smaller boats and has a very small gravel parking lot. Fishing from the shore is permitted but very limited.

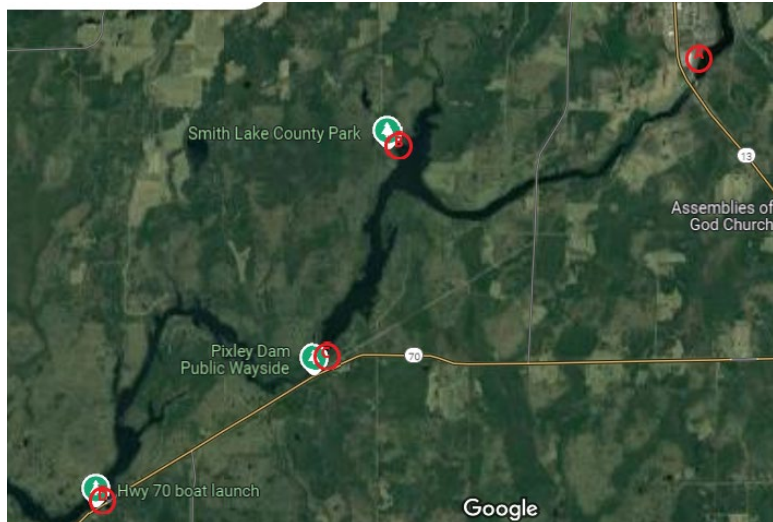


C - Agenda Boat Landing – Furthest North boat land On the North Fork of the Flambeau that you can use a gas motor on due to shallow and rocky areas.

The Agenda landing is for smaller boats. The landing itself is very narrow and is between 2 houses. Landing is packed gravel. There is a small parking lot a short distance from the landing itself.



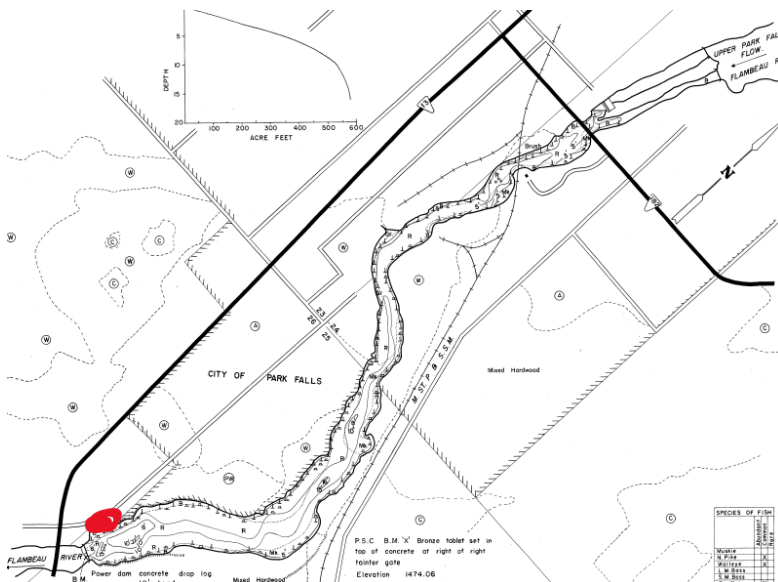
North Fork of the Flambeau from Park Falls Flowage to the South.



A – Lower Park Falls Flowage

Lower Park Falls Flowage 762 is a 62-acre lake located in Price County. It has a maximum depth of 16 feet. Visitors have access to the lake from a public boat landing. Fish include Musky (Present), Panfish (Common), Northern Pike (Common), Walleye (Common) and Sturgeon (Present).

This is a paved boat launch with limited parking for trailers. There is an outhouse on the premises. Fishing from the boat launch and surrounding area is permitted. Many people park here and walk to the below the dam to fish (which is a heavy snag area).



B – Smith Lake Flowage, Campground, and Boat Launch

Smith Lake is a 76-acre lake located in Price County. Visitors have access to the lake from a public boat landing, a public beach.

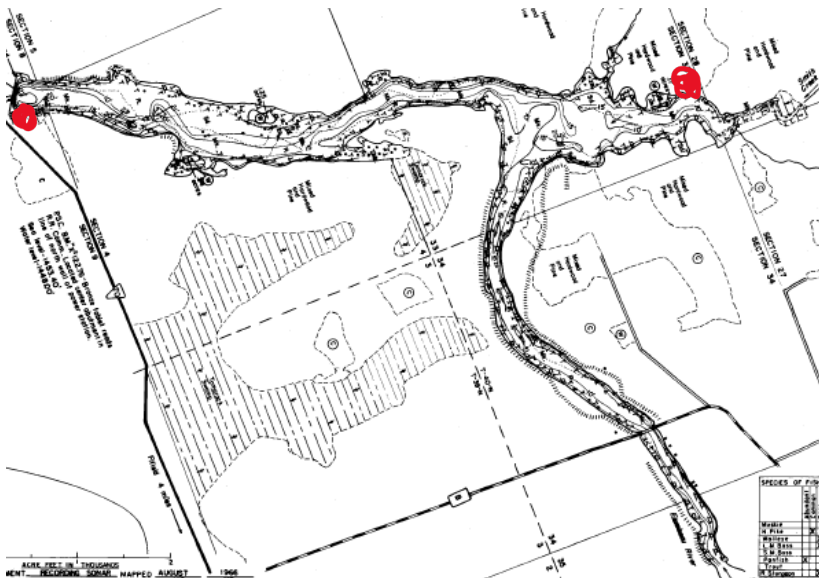
This launch is for smaller boats and has a very small gravel parking lot. Fishing from the shore is permitted but very limited (almost nothing). It is not a frequently used landing, so parking is usually available.



C – Pixley Flowage Boat Landing

Pixley Flowage is a 182-acre lake located in Price County. It has a maximum depth of 23 feet. Fish include Musky (Present), Panfish (Abundant), Northern Pike (Common), Walleye (Common), Catfish (Present), and Sturgeon (Present).

There is a concrete form boat landing with a decent amount of parking space. This landing is not used often and gives larger boats access to the Pixley Flowage. Fishing from the shore is permitted but very limited.



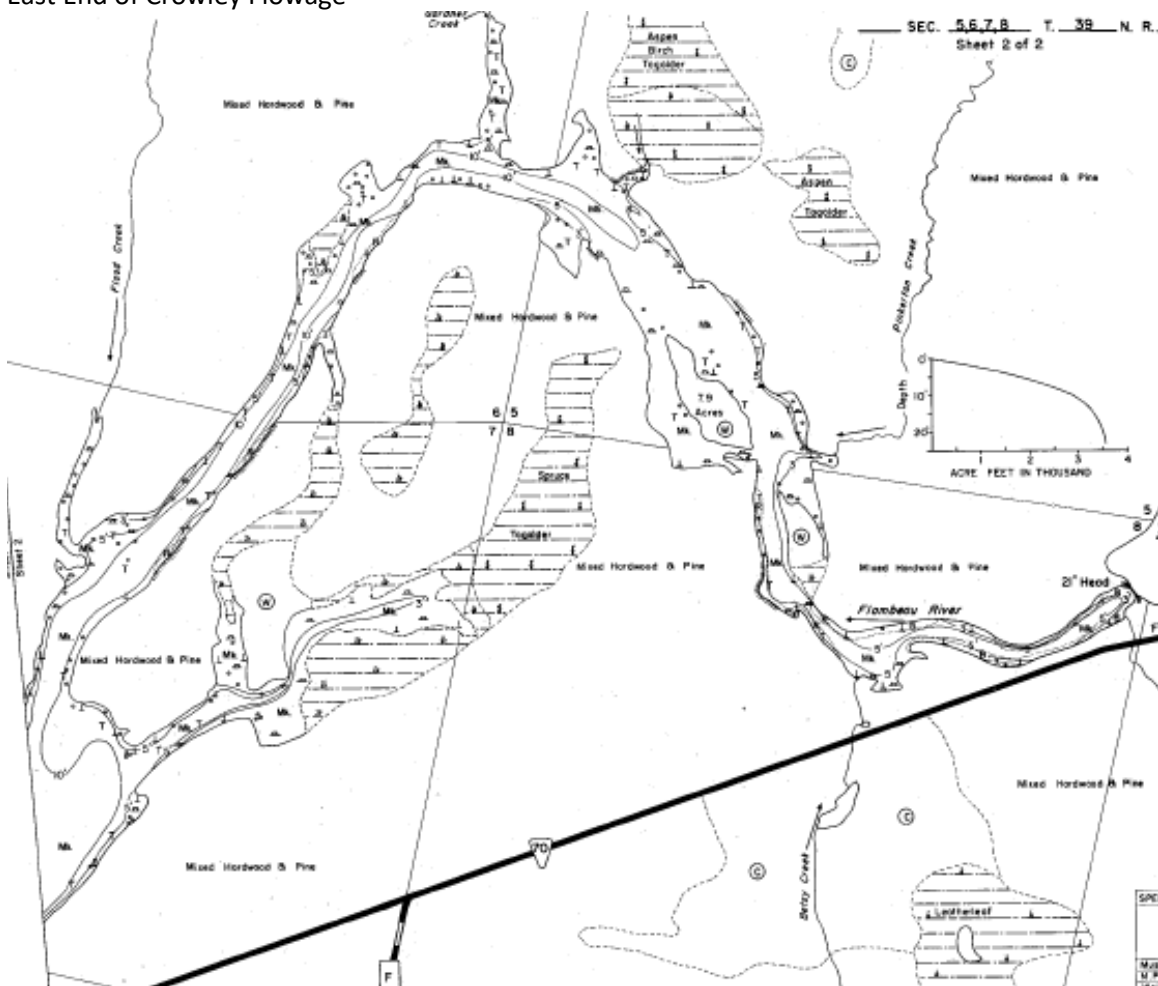
D - Hwy 70 Boat Landing – Crowley Flowage

Crowley Flowage 802 is a 354-acre lake located in Price County. It has a maximum depth of 23 feet. Visitors have access to the lake from a public boat landing. Fish include Musky (Present), Northern Pike (Present), Trout (Abundant), Walleye (Present), Catfish (Present), and Sturgeon (Present).

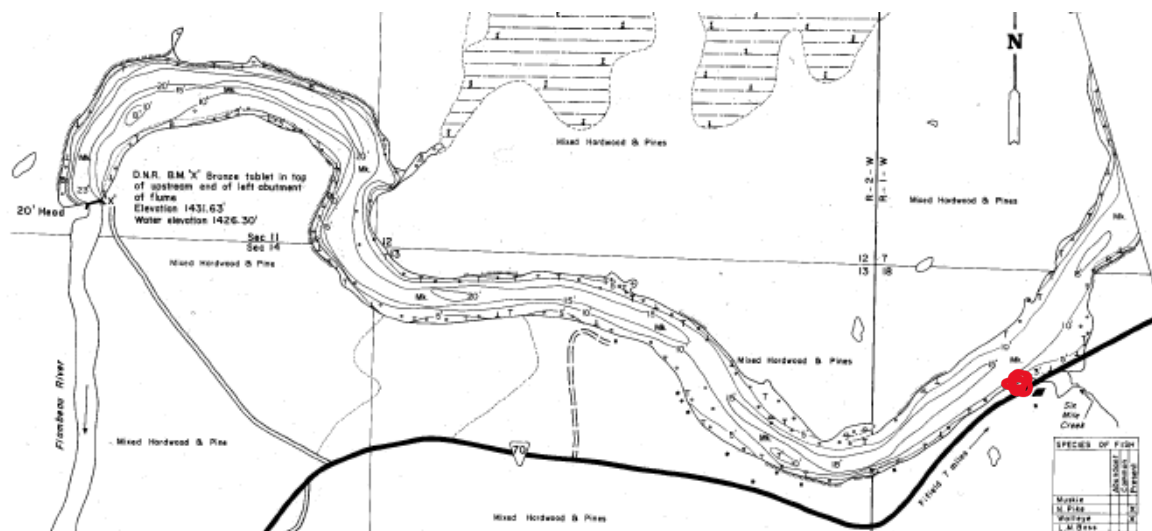
Please note that the boat launch is short and there is an eroded underwater hole where the concrete ends. This can cause damage to your trailer if you attempt to pull your boat out if the trailer tires are in the hole.



East End of Crowley Flowage



West End of Crowley Flowage



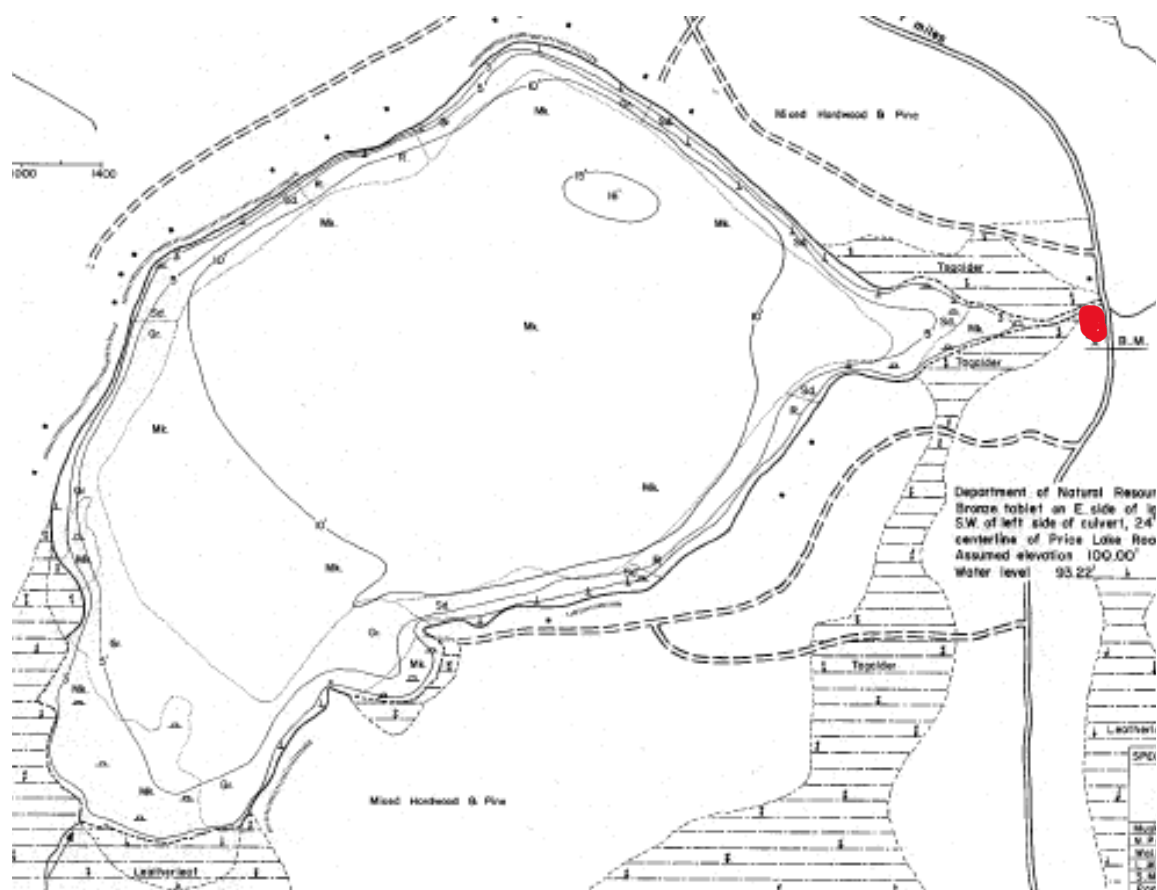
LeTourneau Lake



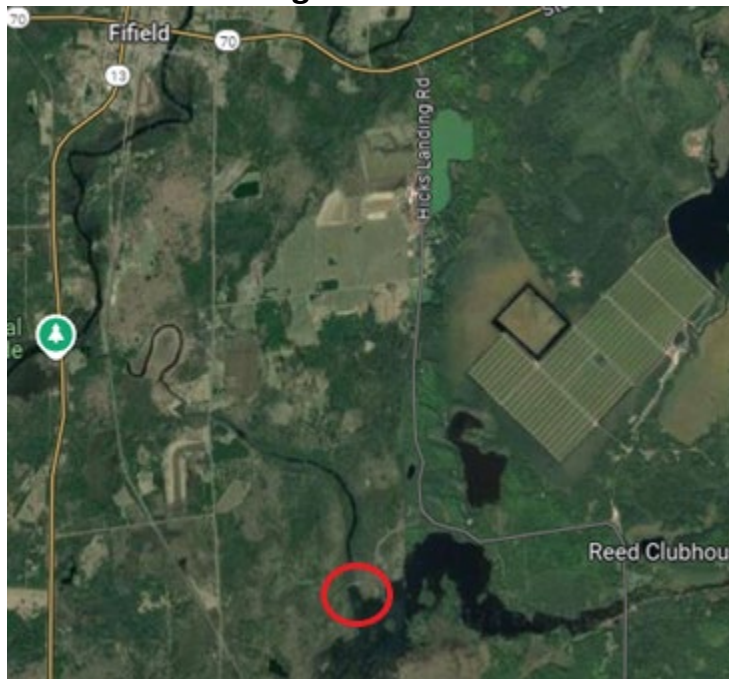
Le Tourneau Lake is a 120-acre lake located in Price County. It has a maximum depth of 16 feet. Visitors have access to the lake from a public boat landing. Fish include Bluegill (Common), Crappie (Abundant), Largemouth Bass (Common), and Northern Pike (Present).

If you are looking for a bucket full of crappie, Letourneau Lake is happy to oblige. Sadly, they are all 9½ inches with an occasional one larger or smaller. This is a great place for kids since the fish bite so veraciously. The last 2 hours of the day are all action. The boat launch can be a challenge since the launch itself is in a low spot, on a curve, and at an angle. Parking can also be an issue since parking is along the road a couple hundred yards away.





Sailor Creek Flowage

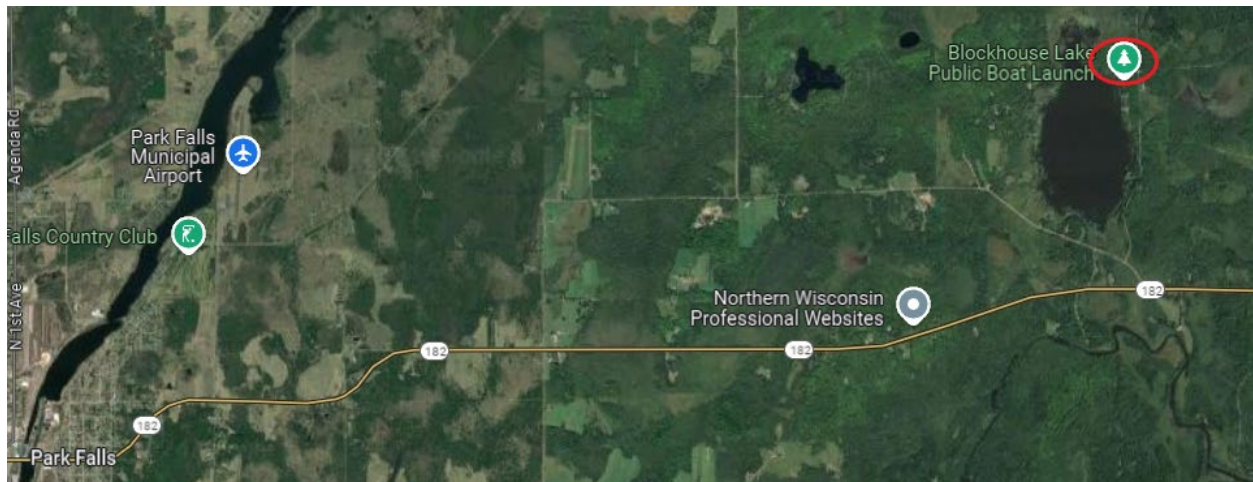


Sailor Creek Flowage is a 201-acre lake located in Price County. It has a maximum depth of 8 feet. Visitors have access to the lake from a public boat landing. Fish include Musky, Panfish (Abundant), Bullhead (Abundant), Largemouth Bass (Common), and Northern Pike (Abundant).

The boat launch is well maintained and there is plenty of close-by parking. The launch itself goes from pavement to gravel, but it is in good shape. There is a lot of shoreline fishing, most notably behind the dam. Larg bluegills and bullheads are prominent.

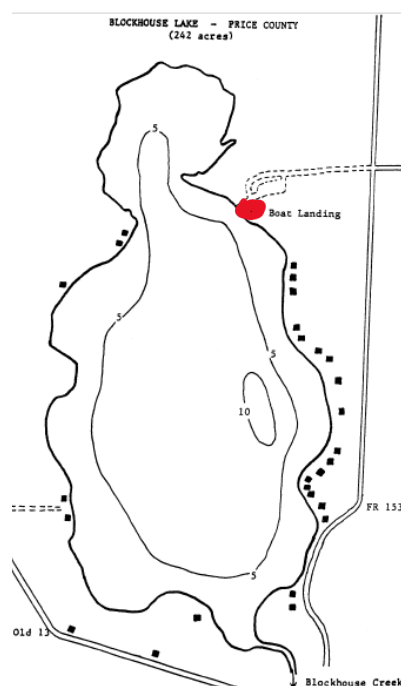


Blockhouse Lake

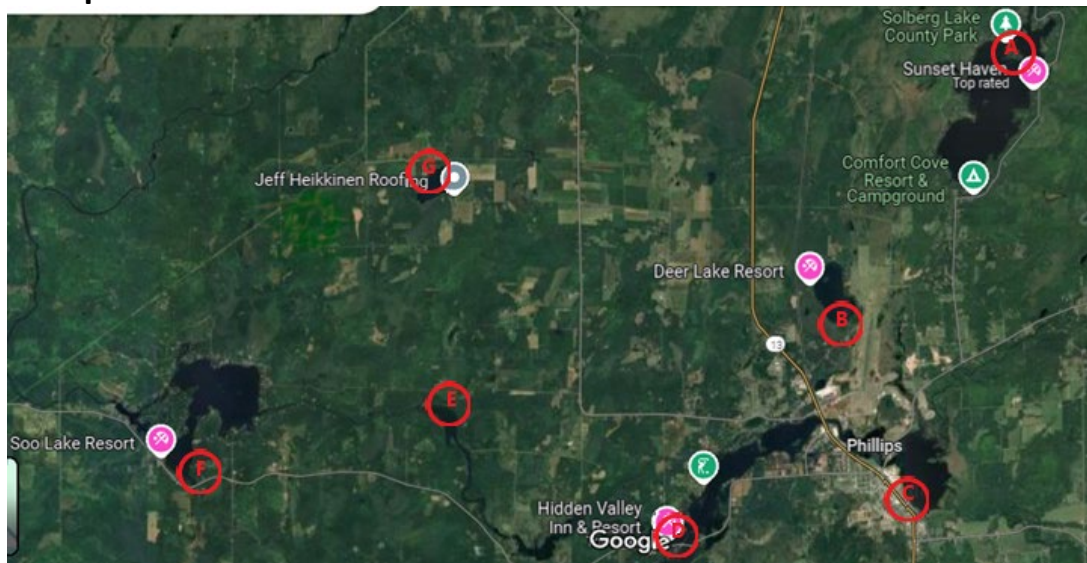


Blockhouse Lake is a 241 acre lake located in Price County. It has a maximum depth of 8 feet. Visitors have access to the lake from a public boat landing. Fish include Musky (Present), Panfish (Common), Largemouth Bass (Common), Northern Pike (Common), and Walleye (Abundant).

This is a gravel boat launch. Parking is limited. Blockhouse lake has excess aquatic growth and can be difficult to manage with a gas or trolling motor as the summer progresses. The fishing from shore happens only within the boat launch waterway due to the high quantity of water plants.



Phillips Lakes



A - Solberg Lake Boat Ramp

Solberg Lake is an 844-acre lake located in Price County. It has a maximum depth of 16 feet. Visitors have access to the lake from public boat landings, public beaches. Fish include Musky (Common), Panfish (Abundant), Largemouth Bass (Present), Northern Pike (Present), and Walleye (Abundant). The lake's water clarity is low.

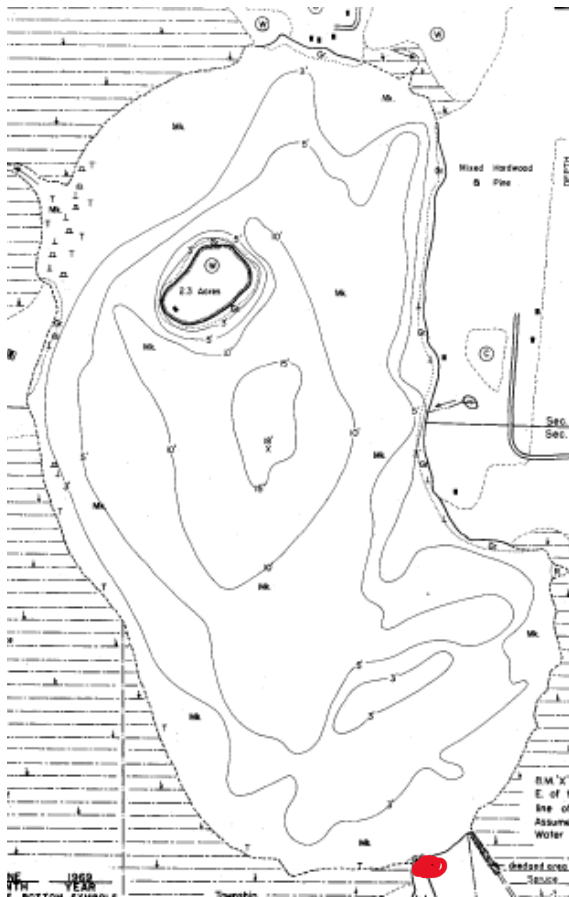
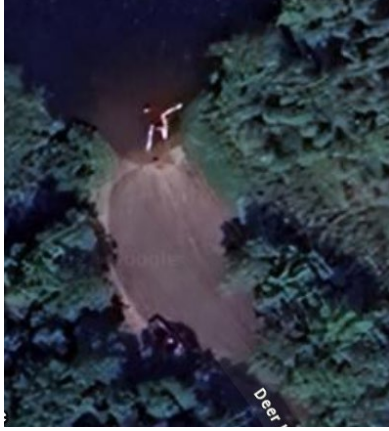
Solberg Lake boat ramp is located inside the Solberg Lake County Park. This is a modern boat launch with pavement and parking spaces for longer trucks and trailers. There is an outhouse on the premises. Fishing from the boat launch and surrounding area is permitted.



B - Deer Lake

Deer Lake is a 143-acre lake located in Price County. It has a maximum depth of 18 feet. Visitors have access to the lake from a public boat landing. Fish include Musky (Abundant), Panfish (Present), Largemouth Bass (Common), and Northern Pike (Present).

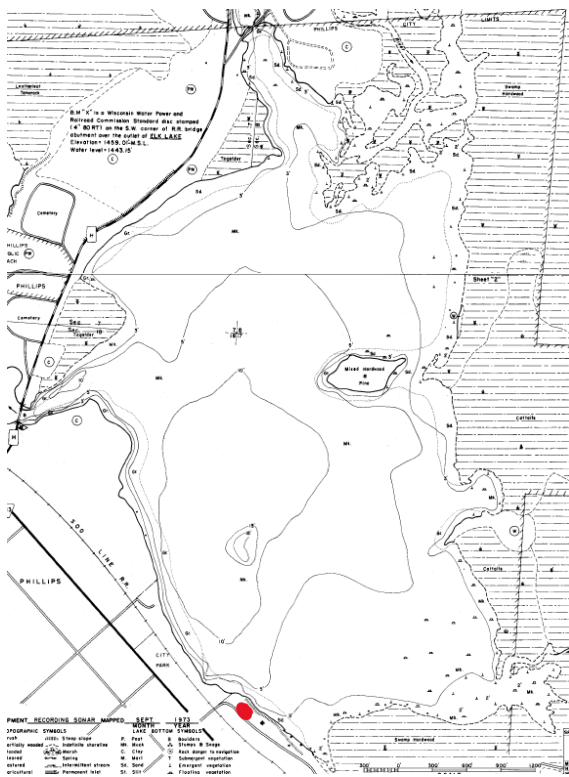
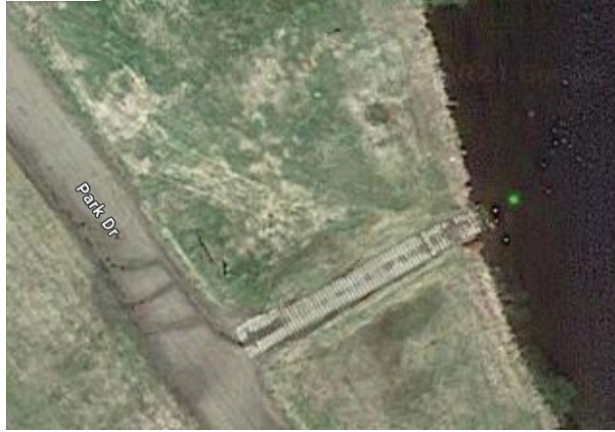
This launch is on the primitive side. This launch is for smaller boats and has a very small gravel parking lot. Fishing from the shore is permitted but very limited.



C - Duroy Lake

Duroy Lake is a 350-acre lake located in Price County. It has a maximum depth of 18 feet. Fish include Musky (Common), Panfish (Present), Largemouth Bass (Present), Smallmouth Bass (Present), Northern Pike (Common), and Walleye (Abundant).

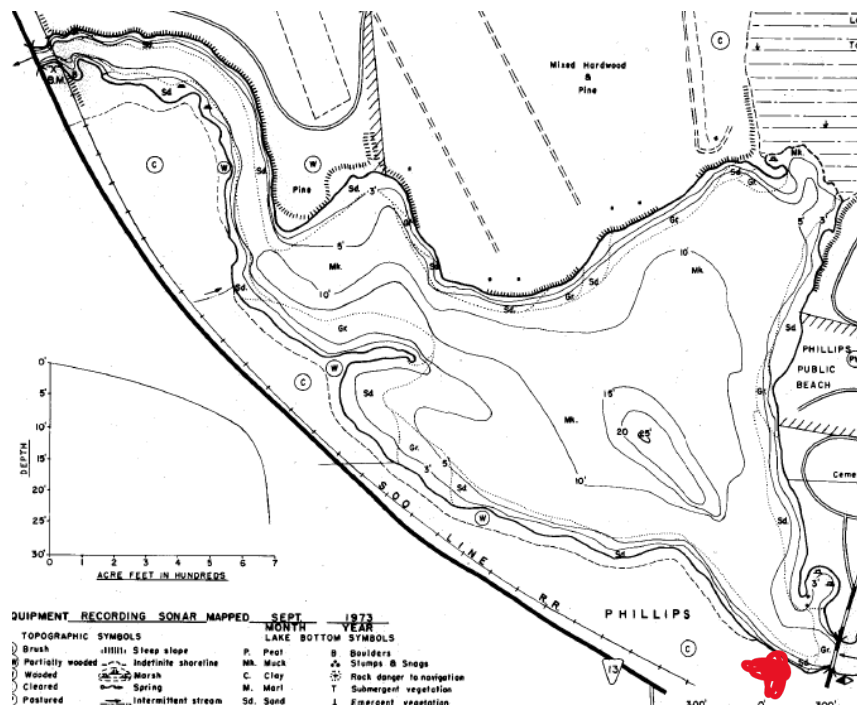
This launch is on the primitive side. This launch is for medium boats and has a large grassy area for parking. Located within the City of Phillips, there is ample opportunity to take a break and visit local restaurants and stores. Fishing from the shore is permitted but very limited. Lots of shoreline brush.



Elk Lake

Elk Lake is an 87-acre lake located in Price County. It has a maximum depth of 25 feet. Visitors have access to the lake from public boat landings, a public beach. Fish include Musky (Common), Panfish (Present), Smallmouth Bass (Present), Northern Pike (Common), and Walleye (Present).

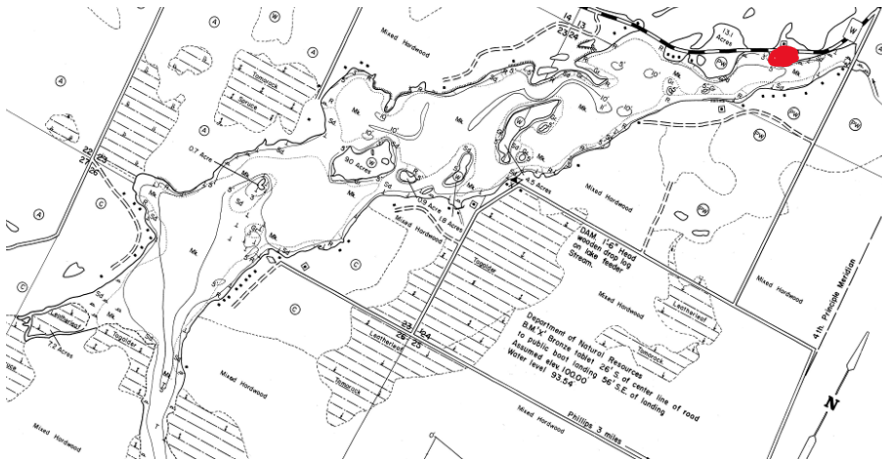
One of the nicer boat launches available. Attached to a beautiful park. There is a very large parking area and a well-maintained boat ramp. There are modern bathrooms on the premises as well as a picnic area. There are a lot of available places to fish from the shore. Located within the City of Phillips, there is ample opportunity to take a break and visit local restaurants and stores within walking distance.



D - Wilson Flowage

Wilson Lake is a 348-acre lake located in Price County. It has a maximum depth of 11 feet. Visitors have access to the lake from public boat landings. Fish include Musky (Common), Panfish (Present), Largemouth Bass (Present), Northern Pike (Present), and Walleye (Abundant).

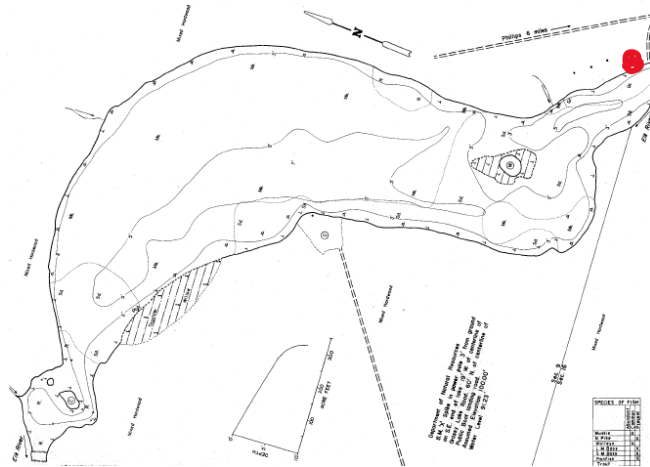
This boat launch is a well-maintained utility launch. There is good availability for parking and has a concrete ramp.



E - Grassy Lake

Grassy Lake is a 72-acre lake located in Price County. It has a maximum depth of 7 feet. Visitors have access to the lake from a public boat landing. Fish include Musky (Common), Panfish (Present), Largemouth Bass (Present), Smallmouth Bass (Present), Northern Pike (Present), and Walleye (Common).

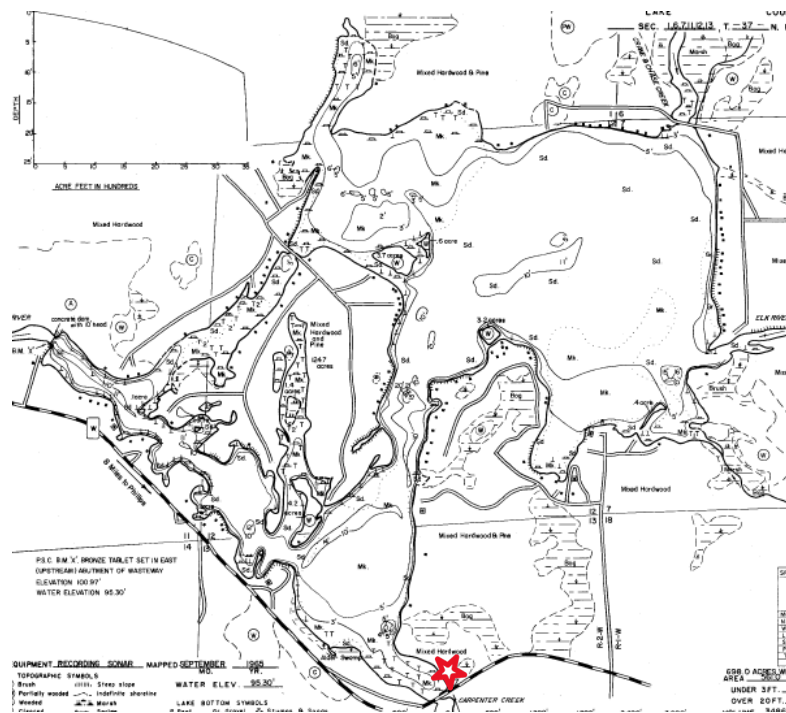
Grassy lake is on the shallower side of lakes and there are underwater structures that you will need to pay attention to; mostly rocks and trees. This launch is on the primitive side. This launch is for smaller boats and has a very small gravel parking lot. Fishing from the shore is permitted but very limited.



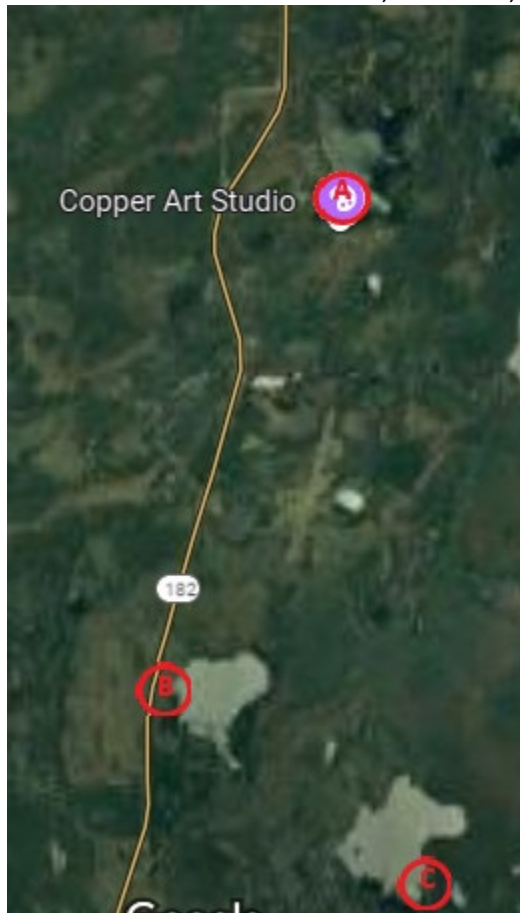
Soo Lake (Lac Sault Dore)

Lac Sault Dore is a 601-acre lake located in Price County. It has a maximum depth of 21 feet. Visitors have access to the lake from public boat landings. Fish include Musky (Common), Panfish (Common), Largemouth Bass (Present), Smallmouth Bass (Present), Northern Pike (Common), and Walleye (Common). The lake's water clarity is low.

The Soo Lake launch is large and in good shape. Since it is located at the back of a shallow bay, there is no shore fishing due to all the weeds. Stay on the water path to get to the main water since the south side of the lake has many shallow stumps.



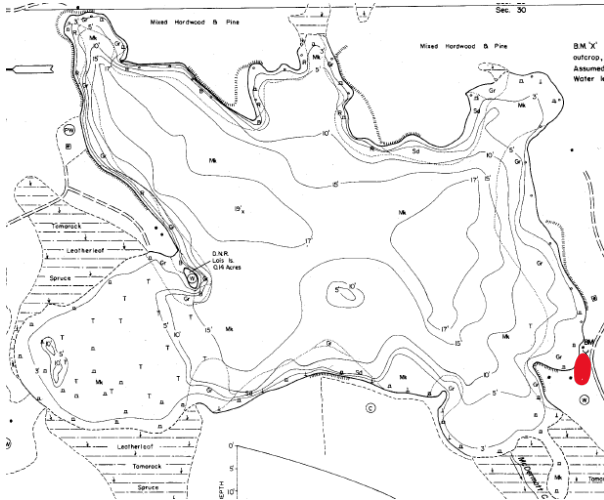
Lakes on East 182 – McDermott, Patterson, and Newman.



A - McDermott

McDermott Lake is an 82-acre lake located in Iron County. It has a maximum depth of 19 feet. Visitors have access to the lake from a public boat landing. Fish include Musky (Present), Panfish (Common), Largemouth Bass (Common), Northern Pike (Common), and Walleye (Present).

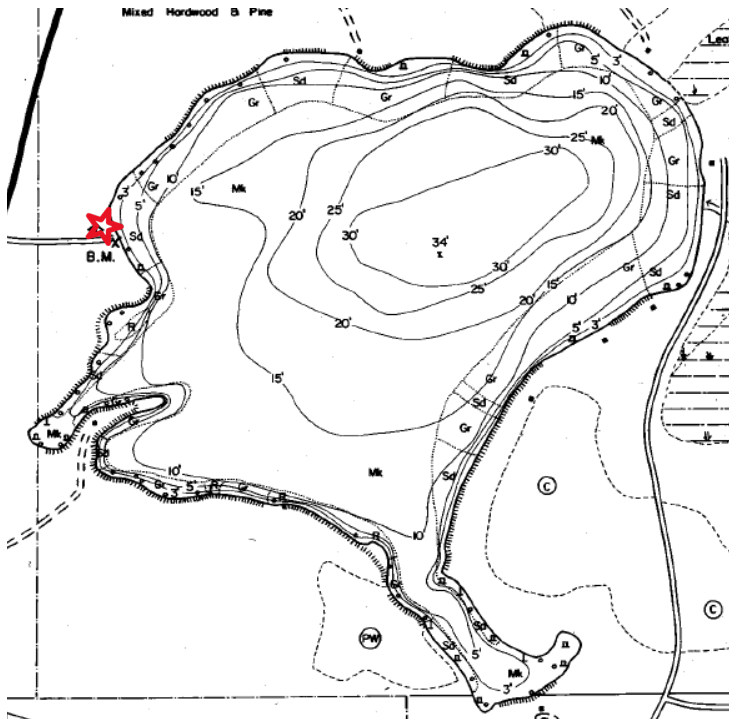
McDermott lake is a small lake with big opportunities. It is on the smaller side and has a very small rustic boat launch. There is very little parking. This is small boat water.



B - Patterson Lake

Patterson Lake is a 65-acre lake located in Price County. It has a maximum depth of 34 feet. Visitors have access to the lake from a public boat landing. Fish include Trout. (Common)

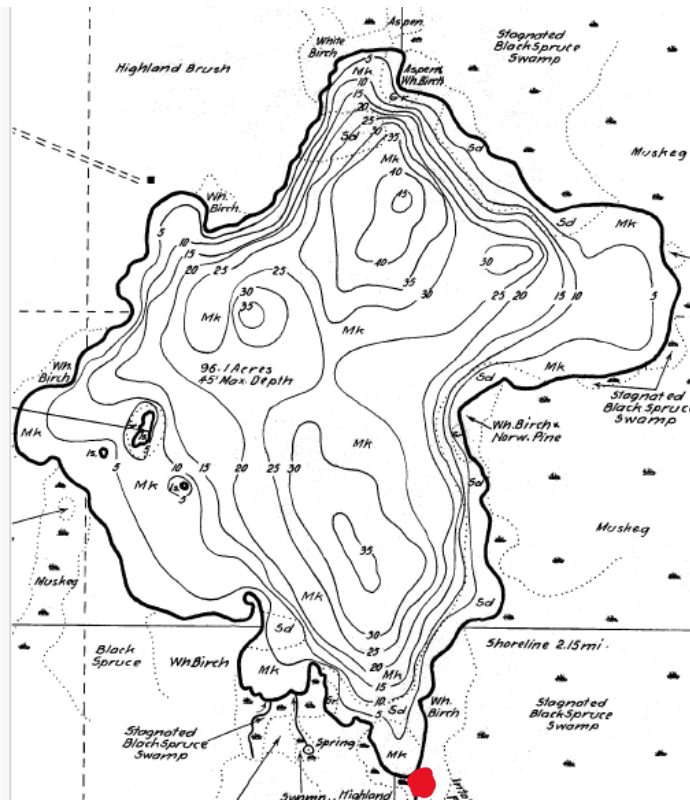
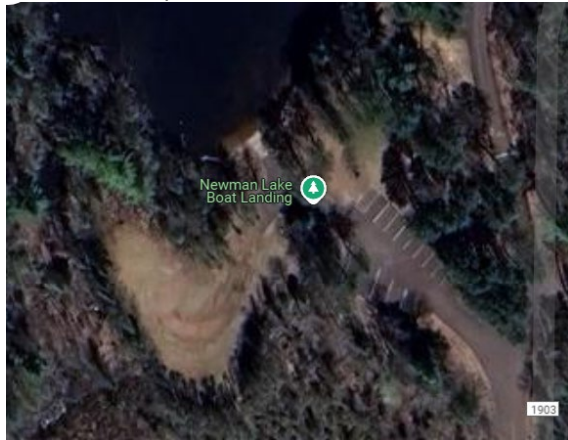
This launch is on the primitive side. This launch is for smaller boats and has a very small dirt parking lot. Fishing from the shore is permitted and plentiful. The water is very clear and holds trout and Walleye alike. The shoreline is very wooded and rustic.



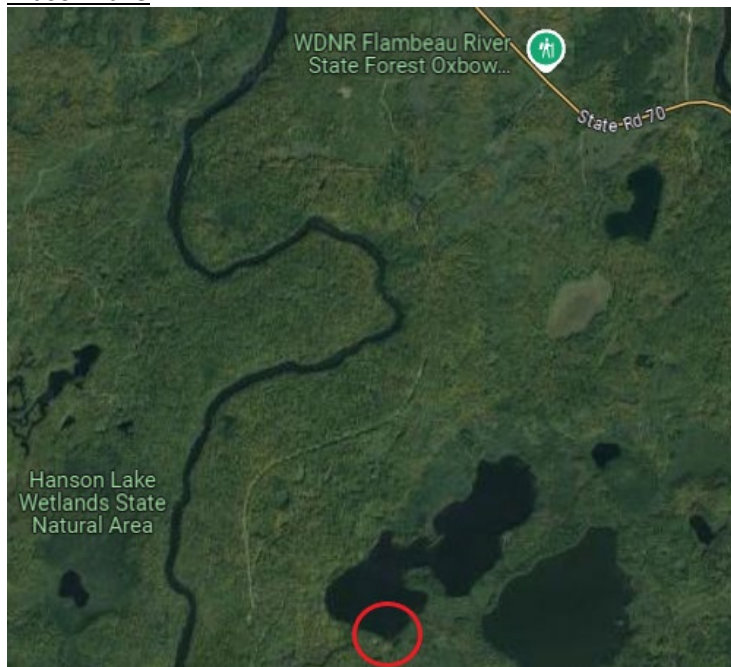
Newman Lake

Newman Lake is a 90-acre lake located in Price County. It has a maximum depth of 45 feet. Visitors have access to the lake from a public boat landing, a public beach. Fish include Panfish (Common), Largemouth Bass (Common), and Smallmouth Bass (Present).

This boat launch is a well-maintained utility launch. There is good availability for parking and has a concrete ramp.

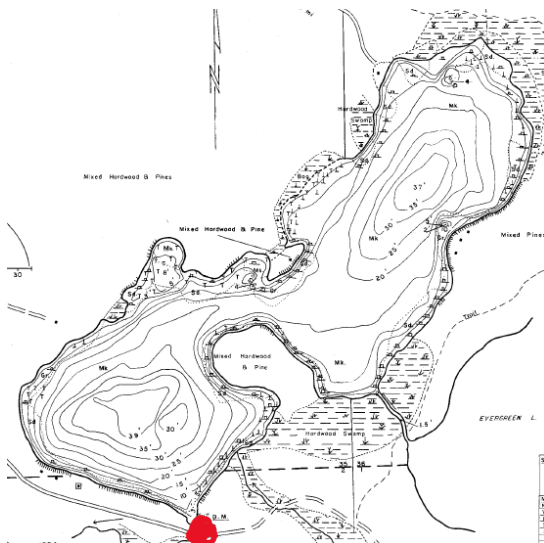


Mason Lake

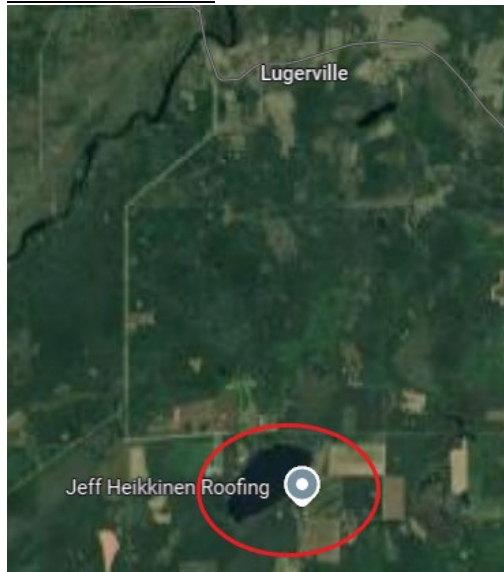


Mason Lake is a 197-acre lake located in Sawyer County. It has a maximum depth of 39 feet. Fish include Musky (Common), Panfish (Present), Largemouth Bass (Present), and Walleye (Abundant).

This launch is on the primitive side. This launch is for smaller boats and has a very small parking lot up the road 100 yards from the ramp. Fishing from the shore is permitted but limited. The launch itself is long, shallow, sandy so a four-wheel drive vehicle is encouraged.



Crane Chase Lake



Crane Chase Lake is an 88-acre lake located in Price County. It has a maximum depth of 22 feet. Visitors have access to the lake from a public boat landing. Fish include Panfish (Common), Largemouth Bass (Common), Northern Pike (Present), and Walleye (Present).

Crane Chase Lake has a primitive gravel boat launch. Good for smaller boats. There is a nice, covered picnic area. There is fishing from the shore, but it is limited. There is limited parking along the side of the road, and it is tight turning around.

