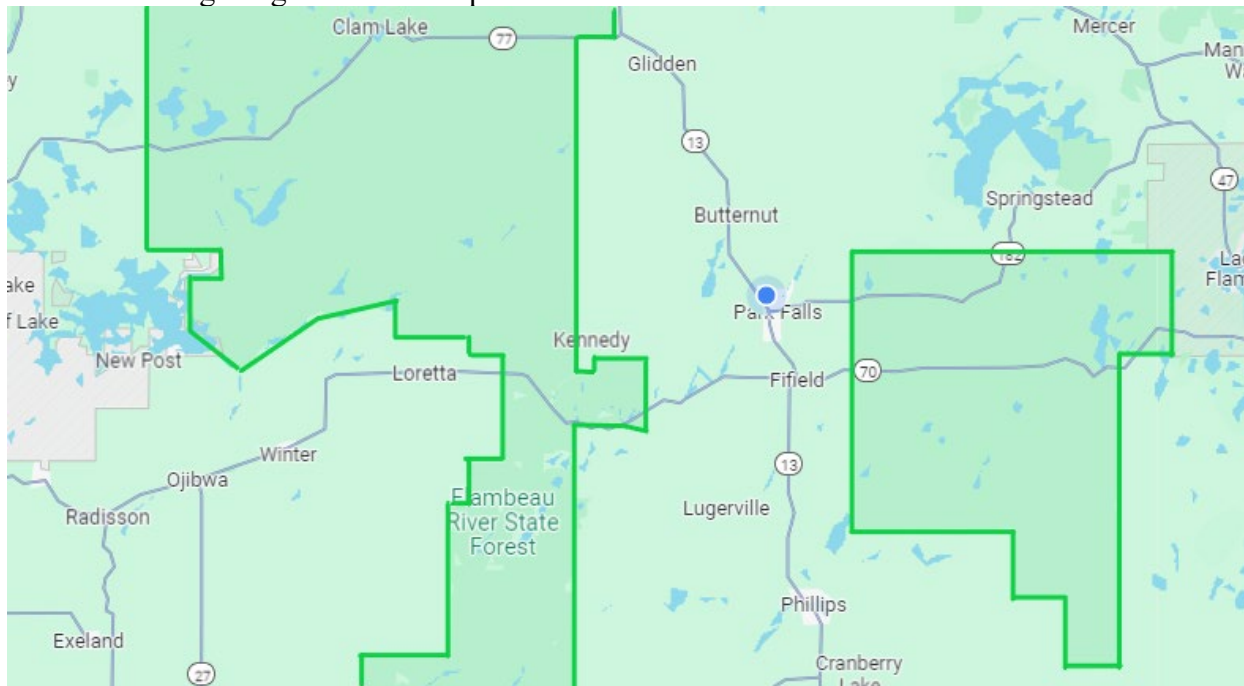


Public Hunting

The state of Wisconsin has a huge amount of public hunting land available for all types of game. Not only do they have ample public forests, they give significant tax breaks to landowners in order for the public to have access to the property.

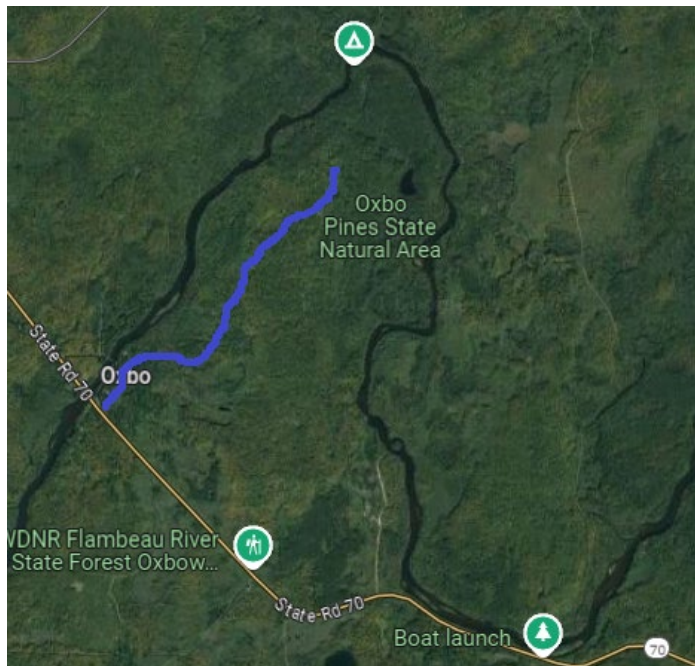
This document focusses government owned land and locations. You can access other huntable properties using applications like onX Hunt maps and other 3rd party applications (a subscription may apply).

Park Falls is surrounded by a great deal of State Forest that is available for public hunting. Located within the green lines has public access.



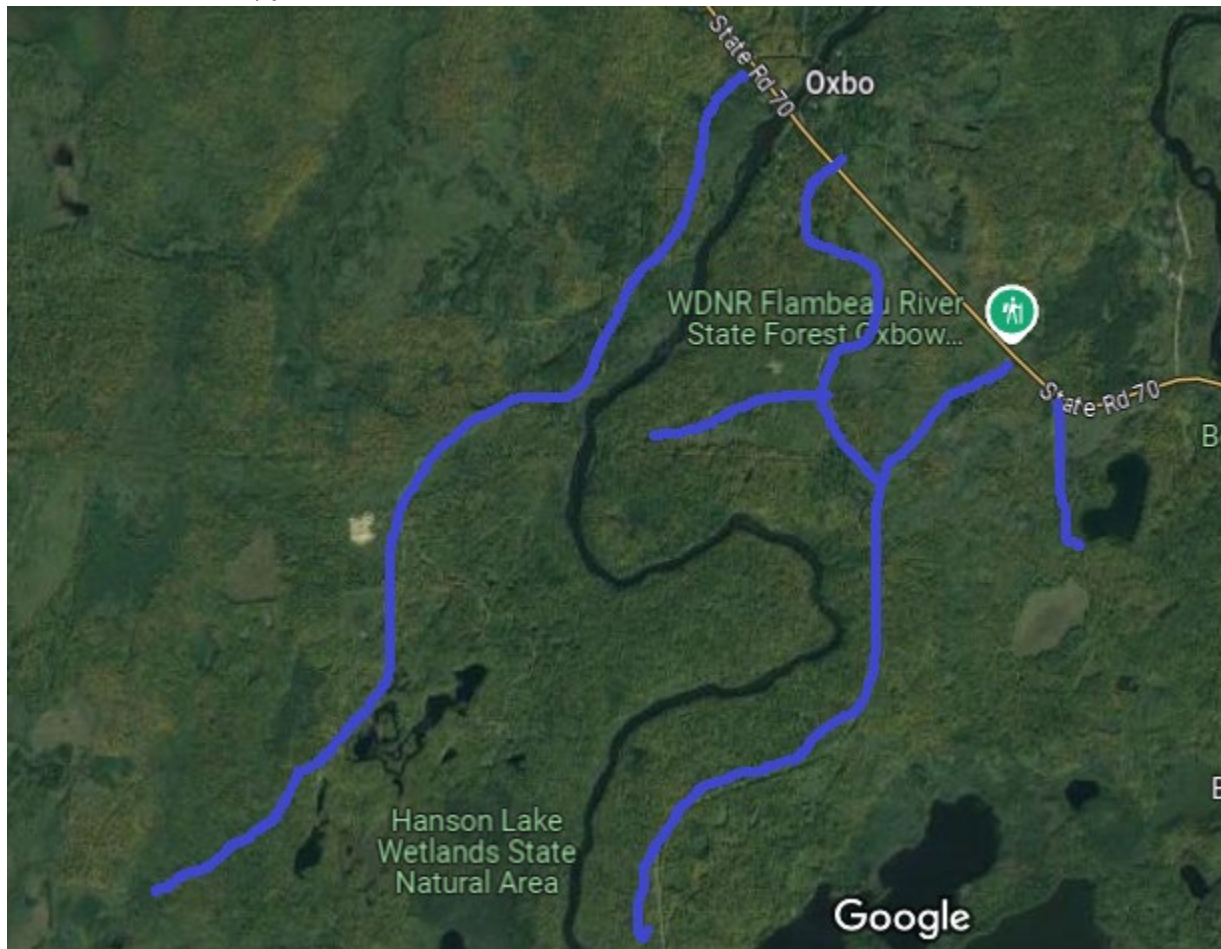
This is a very large area, and some areas have better access to dense forest locations for Grouse and isolated areas where the big bucks like to hide. More detailed maps of specific area are described below, but by no means are these the only public locations available.

Oxbow – North of 70



About 16 miles from Fifield on Highway 70 is the Oxbow turn off. This natural peninsula is larger than it looks. Travel past the Oxbow Resort, past the bridge, past the boat launch, past the quad trail turn off, and go another 100 yards or so and you will be ready to go. You may want to drive to the end of the road, where there is a gate, to get an idea of the lay of the land. There are many side roads from logging that you can walk.

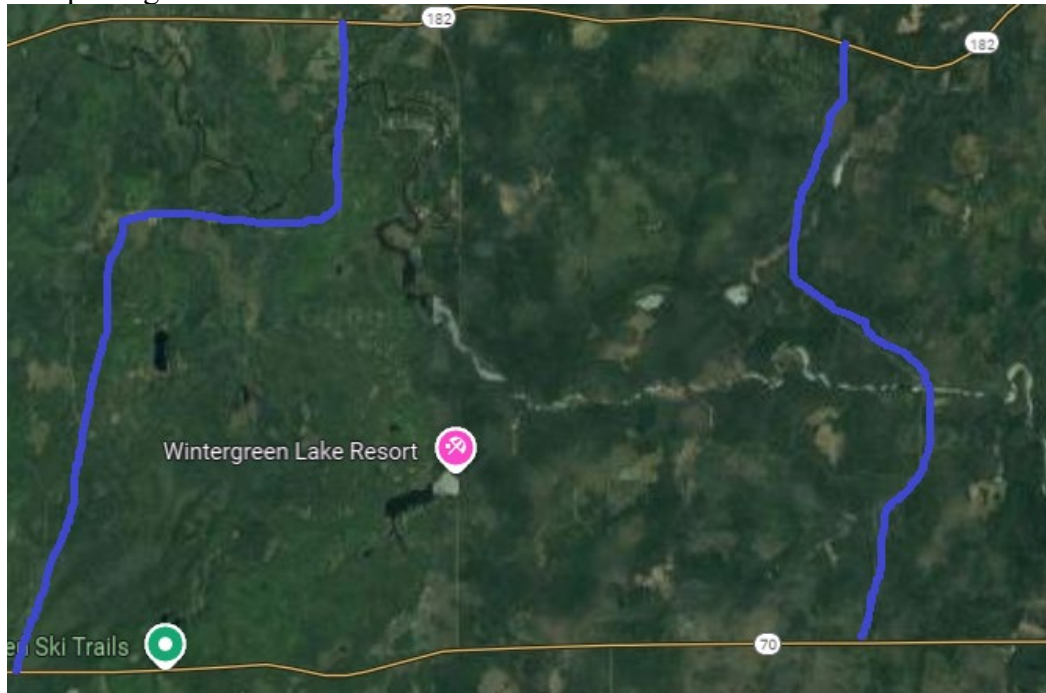
Oxbow – South of 70



On the west side of the river is Payne Farm Rd. The only thing left of the farm are 2 stone pillars where the driveway used to be. There are a few very small pieces of private land on this road so watch for posted signs. There are logging roads that cut into the woods all along this road. This is a dead-end road, so don't expect a lot of traffic.

On the east side of the road, you can enter the forest on Dog Patch Road or Snuss Blvd. There are a few private residences at the beginning of Dog Patch Road, but not many after that. This is also a dead-end road, but it gets more traffic due to the Mason Lake boat landing is located at the end of Snuss Blvd. There are several logging trails that cut off each side of the road. Lots of miles to cover. This area also has a quad trail going through it. People are allowed to walk the quad trails and hunt in the State of Wisconsin. You may not drive a vehicle or ATV down the trail to find a preferred location. Please check local laws for any additional information.

Chequamegon-Nicolet National Forest



To the west of Park Falls and Fifiield, between Highway 182 to the north and Highway 70 to the south are two roads: Sugarbush Road and Cedar Rapids Road. They do get some traffic due to their convenient locations to cut up or down from 182 and 70. There are some private homes throughout the area, so watch for posted signs. There is a quad trail that runs through the area between both roads. Wisconsin Law states that hunters may walk the ATV trails but may not use any vehicle to access a location on the trail and then hunt. You will have to walk. This area gets a little more action than most areas, so don't be surprised if you run into another hunter on the weekends. This is a very large area to hunt. Be careful not to get lost.

“School Forests”

are

Public Land

School forests are pieces of property that have been donated to school districts throughout the State of Wisconsin. These properties are considered “public land,” except for when children are present. Based on location, such as located within City Limits or adjacent to a physical school building, some additional properties may also be excluded from public use. These properties are scattered throughout the school district and not usually attached to other public land, hence they have very limited use.

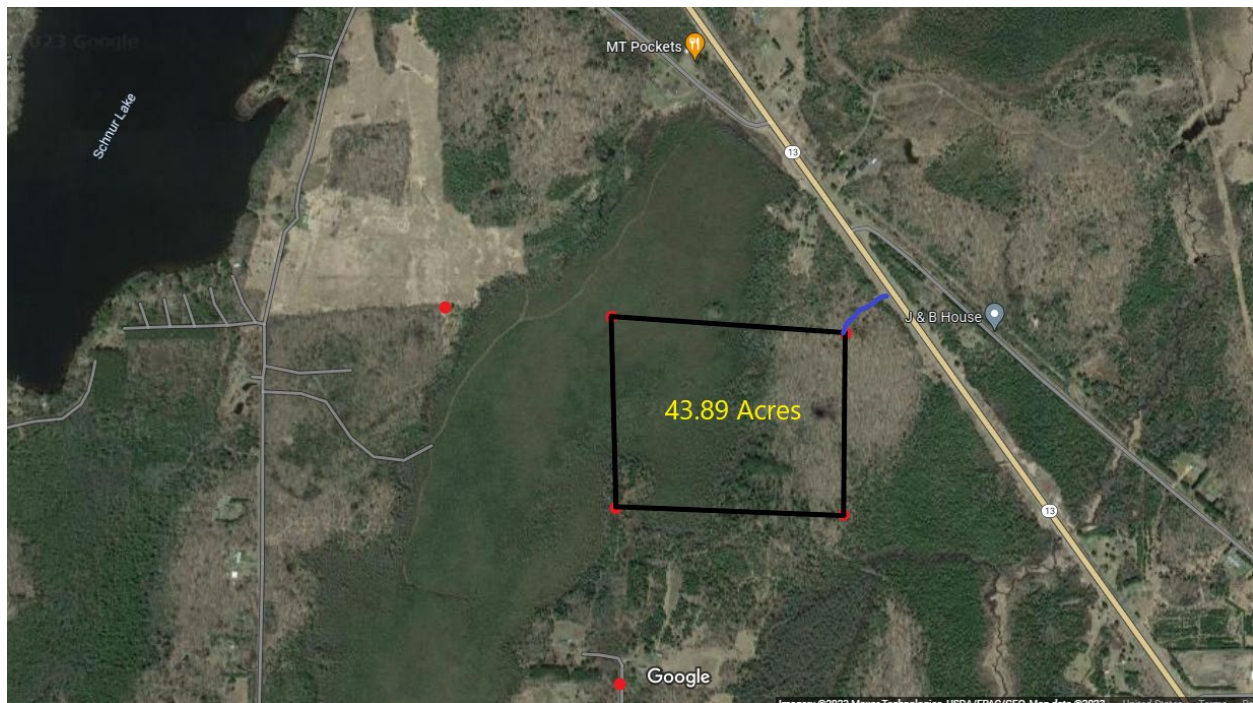
Town of Fifield School Forest

- 1) Starting point at the South Campus at the stop sign across the street from the water tower.
Turn right and continue for .45 miles until you get to the stop sign on the corner of Highway 13 and 9th street.
- 2) Take a left on Highway 13 and drive for 5.9 miles.
- 3) Turn Left on Highway 70 and drive 1.7 miles.
- 4) The school property is divided into 2 pieces by Highway 70. The Western side of the property can be accessed from Hilgart Road to the South or Boruta Road to the North.



Town of Lake School Forest

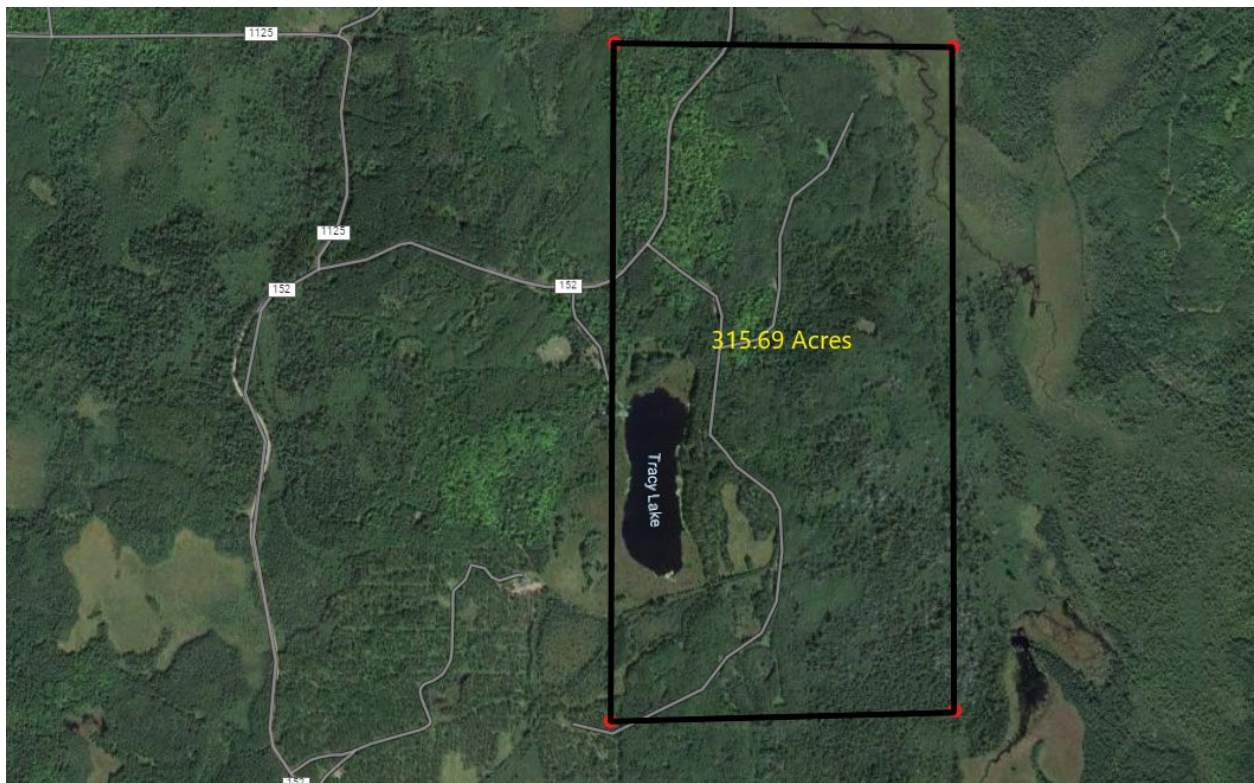
- 1) Starting point at the South Campus at the stop sign across the street from the water tower.
- 2) Turn right and continue for .45 miles until you get to the stop sign on the corner of Highway 13 and 9th street.
- 3) Take a right on Highway 13 and drive 1.5 miles.
- 4) Property is on the left (West) side of the road and there is and requires walking on an easement for .1 miles to reach the North-East corner of the property.



In May of 1932, Park Falls High School received its first forest in the Town of Lake on the West side of Highway 13. The Junior Foresters Club planted 50,000 trees between 1928 - 1936, which included 16 highland acres on this parcel. The trees included Norway Spruce, Norway Pine and White Spruce. Subsequent harvesting of these trees occurred in 2022, completing a 90 year timber cycle.

Town of Fifield - Tracy Lake School Forest

- 1) Starting point at the South Campus at the stop sign across the street from the water tower.
Turn right and continue for .45 miles until you get to the stop sign on the corner of Highway 13 and 9th street.
- 2) Take a left on Highway 13 and drive for 1.2 miles.
- 3) Take a left on 182 and drive for 7.2 miles.
- 4) Take a right on Sugarbush Road and drive for 2.8 miles.
- 5) The entry to Tracy Lake School Forest is on the left.
- 6) Tracy Lake driveway is .3 mile and ends by the pavilion.



Town of Sherman - Springstead Forest 1

- 1) Starting point at the South Campus at the stop sign across the street from the water tower. Turn right and continue for .45 miles until you get to the stop sign on the corner of Highway 13 and 9th street.
- 2) Take a left on Highway 13 and drive for 1.2 miles.
- 3) Take a left on 182 and drive 18.6 miles.
- 4) Turn left on Flowage Road and drive for .7 miles
- 5) The property is located on the left side of the road.



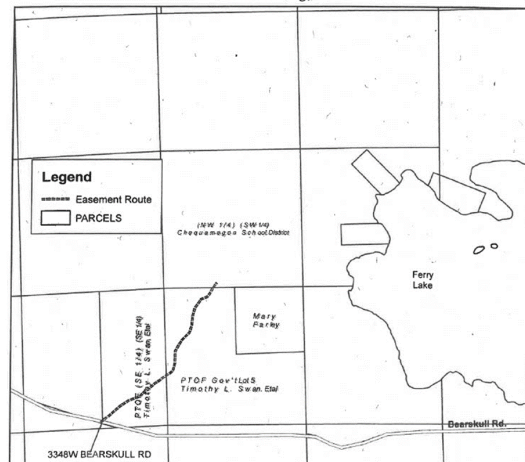
Town of Sherman - Springstead Forest 2

- 1) Starting point at the South Campus at the stop sign across the street from the water tower. Turn right and continue for .45 miles until you get to the stop sign on the corner of Highway 13 and 9th street.
- 2) Take a left on Highway 13 and drive for 1.2 miles. Take a left on 182 and drive 20.9 miles. Take a right on Bearskull Road and drive .2 miles. Take a left on West Bearskull Road and drive for .9 miles. The property is on the left (North) side of the road and requires walking on an easement for .25 miles to reach the southern edge of the property.



Easement Map

*Chequamegon School District - Springstead School Forest (Ferry Lake)
NW 1/4 SW 1/4 Section 23, T 41 N, R 3 E, Town of Sherman
Iron County, WI*



Town of Gordon School Forest

- 1) Starting point at the South Campus at the stop sign across the street from the water tower.
- 2) Turn right and continue for .45 miles until you get to the stop sign on the corner of Highway 13 and 9th street.
- 4) Take a right on Highway 13 and drive 17 miles.
- 5) Take a right on Egan Road.
- 6) The South-West corner of the property begins at the corner of Highway 13 and Egan Road and continues on the right until the Egan Road meets the river.

